

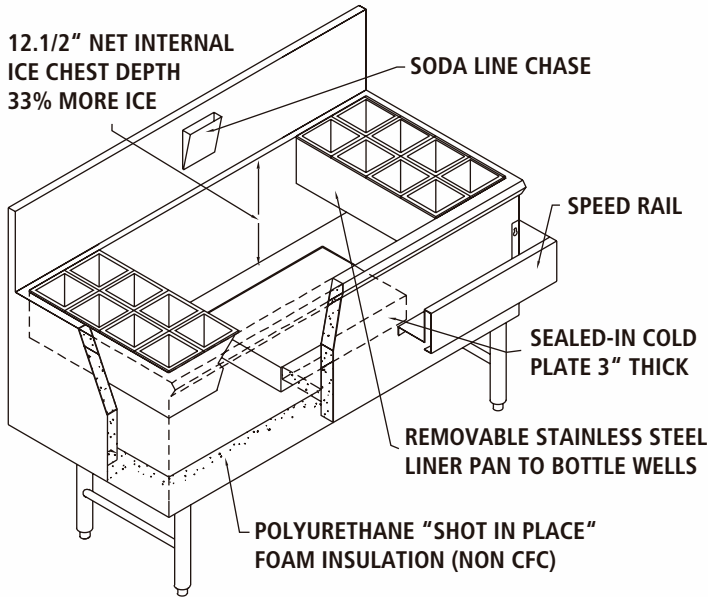


ICE CHEST

MODULAR COMPONENTS

PROJECT _____

ITEM NO. _____



MODEL No. IICS-48 SHOWING OPTIONAL ITEM
 MODEL No. ISRS-48 SINGLE SPEED RAIL
 MODEL No. P-8 EIGHT CIRCUIT COLD PLATE
 AND TWO (2) MODEL No. IW-8 EIGHT BOTTLE WELL UNITS



FULLY WELDED INTERIOR WITH 3/8 RADIUS CORNERS



MODELS

'S' SERIES 20.1/2" DEEP WITH 8 CIRCUIT

COLD PLATE

Length	Ice Capacity	Model
<input type="checkbox"/> 24"	81#	IICS-24P8
<input type="checkbox"/> 30"	101#	IICS-30P8
<input type="checkbox"/> 36"	122#	IICS-36P8
<input type="checkbox"/> 42"	144#	IICS-42P8
<input type="checkbox"/> 48"	166#	IICS-48P8

'S' SERIES 20.1/2" DEEP WITHOUT COLD PLATE

<input type="checkbox"/> 12"	45#	IICS-12
<input type="checkbox"/> 18"	65#	IICS-18
<input type="checkbox"/> 24"	81#	IICS-24
<input type="checkbox"/> 30"	101#	IICS-30
<input type="checkbox"/> 36"	122#	IICS-36
<input type="checkbox"/> 42"	144#	IICS-42
<input type="checkbox"/> 48"	166#	IICS-48

'D' SERIES 24" DEEP WITH 8 CIRCUIT COLD PLATE

<input type="checkbox"/> 24"	102#	IICD-24P8
<input type="checkbox"/> 30"	126#	IICD-30P8
<input type="checkbox"/> 36"	153#	IICD-36P8
<input type="checkbox"/> 42"	180#	IICD-42P8
<input type="checkbox"/> 48"	207#	IICD-48P8

'D' SERIES 24" DEEP WITHOUT COLD PLATE

<input type="checkbox"/> 12"	57#	IICD-12
<input type="checkbox"/> 18"	77#	IICD-18
<input type="checkbox"/> 24"	102#	IICD-24
<input type="checkbox"/> 30"	126#	IICD-30
<input type="checkbox"/> 36"	153#	IICD-36
<input type="checkbox"/> 42"	180#	IICD-42
<input type="checkbox"/> 48"	207#	IICD-48

STANDARD FEATURES

- All Heli-arc welded construction
- All 18 gauge type 304, 18/8 stainless steel
- Attractive high polished bullnose edge to front
- Polyurethane 'shot-in-place' insulation
- 12. 1/2" deep ice bin carries full length
- 1" x 3" brass drain
- Easy clean bin with 3/8" radius interior corners

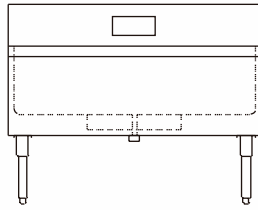
OPTIONS

- P10 Sealed in Cold Plate (10 Circuit 'D' Series Only)
- SC Stainless Steel Sliding Cover
- CT(#) Condiment Tray with Stainless Steel 1/9 Pans
- 18B 18" Deep Ice Bin
- BW(#) Bottle Well (Quantity)
- ID Ice Divider
- PB Perforated False Bottom
- CB Cabinet Base
- BLN6 6" Beverage Line Notch in Splash
- BLN24 24" Beverage (liquor line) Notch in Splash
- M Modified - Custom

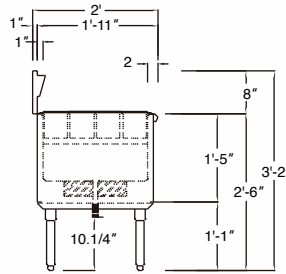


ICE CHEST

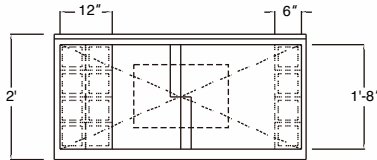
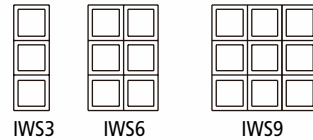
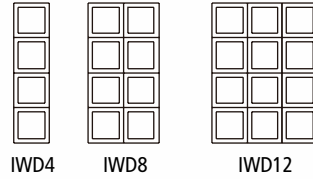
MODULAR COMPONENTS



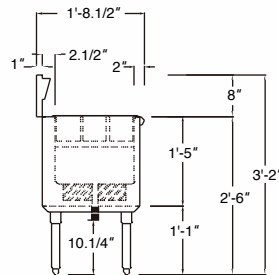
TYPICAL ELEVATION



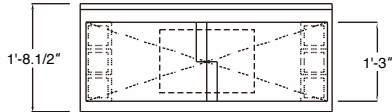
"D" SERIES SECTION



"D" SERIES PLAN



"S" SERIES SECTION



"S" SERIES PLAN

OPTIONAL BOTTLE WELL REQUIREMENTS	
"S" SERIES	"D" SERIES
IWS3 TAKES 6" WIDTH	IWD4 TAKES 6" WIDTH
IWS6 TAKES 12" WIDTH	IWD8 TAKES 12" WIDTH
IWS9 TAKES 18" WIDTH	IWD12 TAKES 18" WIDTH

TWO PIECE SLIDING COVER REQUIREMENTS
 SUBTRACT WIDTH OF DESIRED BOTTLE WELL ASSEMBLIES FROM LENGTH OF ICE CHEST
 eg. 36" ice chest with IWS-3 and IWS-6 use SC-18

'S' SERIES 20.1/2" DEEP WITH 8 CIRCUIT COLD PLATE				
LENGTH	ICE CAPACITY	MODEL No.	WEIGHT	CUBE
24"	81#	IICS-24P8	195	18
30"	101#	IICS-30P8	230	18
36"	122#	IICS-36P8	240	24
42"	144#	IICS-42P8	255	24
48"	166#	IICS-48P8	270	30

'D' SERIES 24" DEEP WITH 8 CIRCUIT COLD PLATE				
LENGTH	ICE CAPACITY	MODEL No.	WEIGHT	CUBE
24"	102#	IICD-24P8	195	18
30"	126#	IICD-30P8	230	18
36"	153#	IICD-36P8	240	24
42"	180#	IICD-42P8	255	24
48"	207#	IICD-48P8	270	30

'S' SERIES 20.1/2" DEEP WITHOUT COLD PLATE				
LENGTH	ICE CAPACITY	MODEL No.	WEIGHT	CUBE
12"	45#	IICS-12	60	6
18"	65#	IICS-18	80	12
24"	81#	IICS-24	100	8
30"	101#	IICS-30	120	8
36"	122#	IICS-36	153	4
42"	144#	IICS-42	180	4
48"	166#	IICS-48	205	0

'D' SERIES 24" DEEP WITHOUT COLD PLATE				
LENGTH	ICE CAPACITY	MODEL No.	WEIGHT	CUBE
12"	57#	IICD-12	60	8
18"	77#	IICD-18	80	12
24"	102#	IICD-24	100	18
30"	126#	IICD-30	126	18
36"	153#	IICD-36	153	24
42"	180#	IICD-42	180	24
48"	207#	IICD-48	205	30

UTILITIES (8 CIRCUIT)
DRAIN
1/2"

UTILITIES
DRAIN
1 x 1"

UTILITIES (10 CIRCUIT)
DRAIN
3/4"