



4 BOWL SINK

MODULAR COMPONENTS

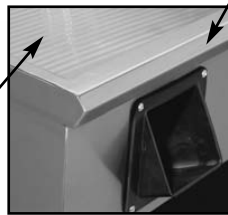
PROJECT _____

ITEM NO. _____



**Model ISU4D-108 SHOWN
WITH 2 RTC - RUBBER TRASH CHUTES**

ATTRACTIVE
POLISHED
BULLNOSE



CONTINUOUS
CORRUGATED



MODELS

'S' SERIES 18.1/2" DEEP WITH (4) - 10" X 14" X 10" BOWLS

| Length | Model |
|-------------------------------|-----------|
| <input type="checkbox"/> 60" | ISU4S-60 |
| <input type="checkbox"/> 66" | ISU4S-66 |
| <input type="checkbox"/> 72" | ISU4S-72 |
| <input type="checkbox"/> 84" | ISU4S-84 |
| <input type="checkbox"/> 96" | ISU4S-96 |
| <input type="checkbox"/> 108" | ISU4S-108 |
| <input type="checkbox"/> 120" | ISU4S-120 |

'D' SERIES 24" DEEP WITH (4) - 10" X 14" X 10" BOWLS

| Length | Model |
|-------------------------------|-----------|
| <input type="checkbox"/> 60" | ISU4D-60 |
| <input type="checkbox"/> 66" | ISU4D-66 |
| <input type="checkbox"/> 72" | ISU4D-72 |
| <input type="checkbox"/> 84" | ISU4D-84 |
| <input type="checkbox"/> 96" | ISU4D-96 |
| <input type="checkbox"/> 108" | ISU4D-108 |
| <input type="checkbox"/> 120" | ISU4D-120 |

STANDARD FEATURES

- All Heli-arc welded construction
- All 18 gauge type 304, 18/8 stainless steel
- Heavy duty stainless steel gussets welded to 14 gauge stainless steel channel supports
- Stainless steel adjustable bullet feet
- Attractive high polished bullnose edge to front
- Sink bowls are seamless to drainboards
- Sink bowls are deep drawn 20 gauge type 304, 18/8 stainless steel
- Standard bowl size 10"x 14"x 10" deep with 1.1/2" drain and standpipe overflow
- Drainboards are continuous corrugation
- Drainboards have 4" wide 18 gauge type 304, 18/8 stainless steel support channels
- Drainboards pitch positively into bowls
- 2 Deck mounted premium faucets with two 12" swing spouts

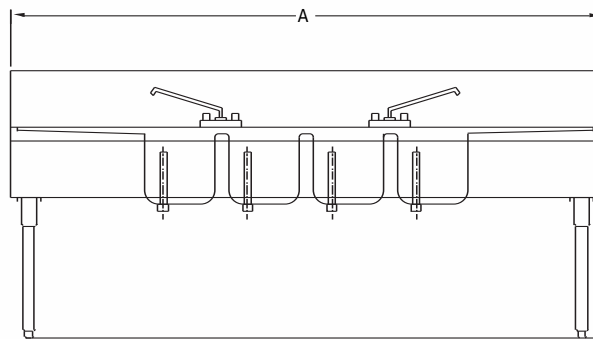
OPTIONS

- TR Towel Rail
- RTC Rubber Trash Chute in Front Apron
- LS Lift Out Strainer Basket For Bowls
- CB Cabinet Base
- RS10 Rack Storage for 10 X 20 Racks
- RS20 Rack Storage for 20 X 20 Racks
- TC Plastic Trash Can
- USS Undershef
- CA Cut Away Apron for Trash Can
- RP Removable Panels
- M Modified - Custom
- SBF Special Brand Faucet Available Upon Request

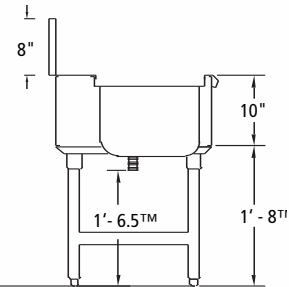


4 BOWL SINK

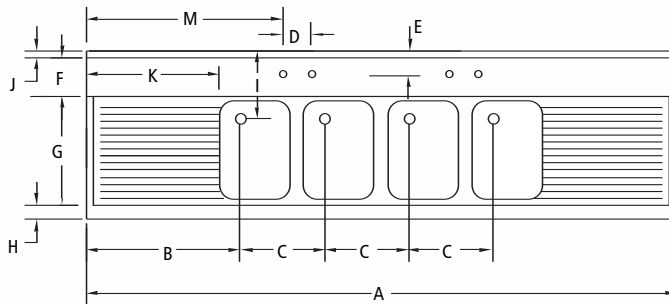
MODULAR COMPONENTS



ELEVATION



SECTION



PLAN

FOR SINKS LOCATED AT FAR LEFT OR RIGHT PLACE AN "R" OR "L" AT THE END OF THE MODEL NUMBER

EXAMPLE: ISU4D - 8L (LEFT HAND BOWLS)

'S' SERIES 18.1/2" DEEP WITH (4) - 10" X 14" X 10" BOWLS

| MODEL No. | A | B | C | D | E | F | G | H | I | J | K | M | O | WEIGHT | CUBE |
|-------------|-----|---------|---------|----|----|----|---------|----|--------|----|----|----|-----|--------|------|
| ISU4S - 60 | 60 | 10.3/4" | 12.1/4" | 4" | 2" | 2" | 15.1/2" | 2" | 7.1/2" | 1" | 7 | 16 | 20" | 150 | 20 |
| ISU4S - 66 | 66 | 13.3/4" | 12.1/4" | 4" | 2" | 2" | 15.1/2" | 2" | 7.1/2" | 1" | 10 | 19 | 20" | 165 | 24 |
| ISU4S - 72 | 72 | 16.3/4" | 12.1/4" | 4" | 2" | 2" | 15.1/2" | 2" | 7.1/2" | 1" | 13 | 22 | 20" | 175 | 24 |
| ISU4S - 84 | 84 | 22.3/4" | 12.1/4" | 4" | 2" | 2" | 15.1/2" | 2" | 7.1/2" | 1" | 19 | 28 | 20" | 190 | 30 |
| ISU4S - 96 | 96 | 28.3/4" | 12.1/4" | 4" | 2" | 2" | 15.1/2" | 2" | 7.1/2" | 1" | 25 | 34 | 20" | 220 | 34 |
| ISU4S - 108 | 108 | 34.3/4" | 12.1/4" | 4" | 2" | 2" | 15.1/2" | 2" | 7.1/2" | 1" | 31 | 40 | 20" | 250 | 40 |
| ISU4S - 120 | 120 | 40.3/4" | 12.1/4" | 4" | 2" | 2" | 15.1/2" | 2" | 7.1/2" | 1" | 37 | 46 | 20" | 275 | 44 |

'D' SERIES 24" DEEP WITH (4) - 10" X 14" X 10" BOWLS

| MODEL No. | A | B | C | D | E | F | G | H | I | J | K | M | O | WEIGHT | CUBE |
|-------------|-----|---------|---------|----|--------|--------|---------|----|-----|----|----|----|-----|--------|------|
| ISU4D - 60 | 60 | 10.3/4" | 12.1/4" | 4" | 4.1/2" | 5.1/2" | 15.1/2" | 2" | 11" | 1" | 7 | 16 | 20" | 150 | 20 |
| ISU4D - 66 | 66 | 13.3/4" | 12.1/4" | 4" | 4.1/2" | 5.1/2" | 15.1/2" | 2" | 11" | 1" | 10 | 19 | 20" | 165 | 24 |
| ISU4D - 72 | 72 | 16.3/4" | 12.1/4" | 4" | 4.1/2" | 5.1/2" | 15.1/2" | 2" | 11" | 1" | 13 | 22 | 20" | 175 | 24 |
| ISU4D - 84 | 84 | 22.3/4" | 12.1/4" | 4" | 4.1/2" | 5.1/2" | 15.1/2" | 2" | 11" | 1" | 19 | 28 | 20" | 190 | 30 |
| ISU4D - 96 | 96 | 28.3/4" | 12.1/4" | 4" | 4.1/2" | 5.1/2" | 15.1/2" | 2" | 11" | 1" | 25 | 34 | 20" | 220 | 34 |
| ISU4D - 108 | 108 | 34.3/4" | 12.1/4" | 4" | 4.1/2" | 5.1/2" | 15.1/2" | 2" | 11" | 1" | 31 | 40 | 20" | 250 | 40 |
| ISU4D - 120 | 120 | 40.3/4" | 12.1/4" | 4" | 4.1/2" | 5.1/2" | 15.1/2" | 2" | 11" | 1" | 37 | 46 | 20" | 275 | 44 |

UTILITIES

| COLD WATER | HOT WATER | DRAIN |
|---------------|--------------|------------|
| 2 x 1/2" COLD | 2 x 1/2" HOT | 4 x 1.1/2" |